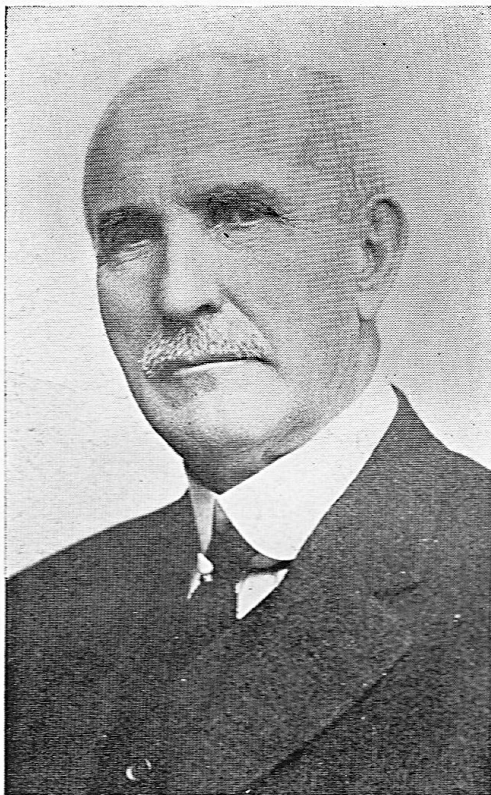


Charles B. Reynolds Memorial Field



CHARLES B. REYNOLDS
1849 - 1926

Principal Northeast 1913 - 1921
Principal Emeritus 1921 - 1926

and Bleistein, had several meetings with the architect, Mr. Harry L. Wagner, a 1916 graduate of Northeast. The large committee decided to place the Memorial entrance at the Southwest corner of the Athletic field.

The funds for the Memorial Entrance came from two principal sources. The Finance Committee appropriated a large amount out of the Northeast Night fund, and the Senior Classes of 1930 and 1931 contributed generously from their Senior Play fund. This was in accordance with the plans, previously expressed, that each Senior Class for four or five years be given opportunity to contribute to the Memorial and have its year engraved upon a suitable tablet. The entire structure is commodious, ornamental and fits into the situation, nicely blending with both the Junior High School and Senior High School architecturally. It is in a position to be seen both from Independence Boulevard and Van Brunt

March first, 1930, the Northeast faculty approved a plan, proposed by one of its number, to name the athletic field in honor of Charles B. Reynolds, our first principal. The plan provided that a suitable, ornamental entrance should be erected in the most advantageous position to beautify this field and preserve the memory of him who first planned and put into execution the Northeast High School.

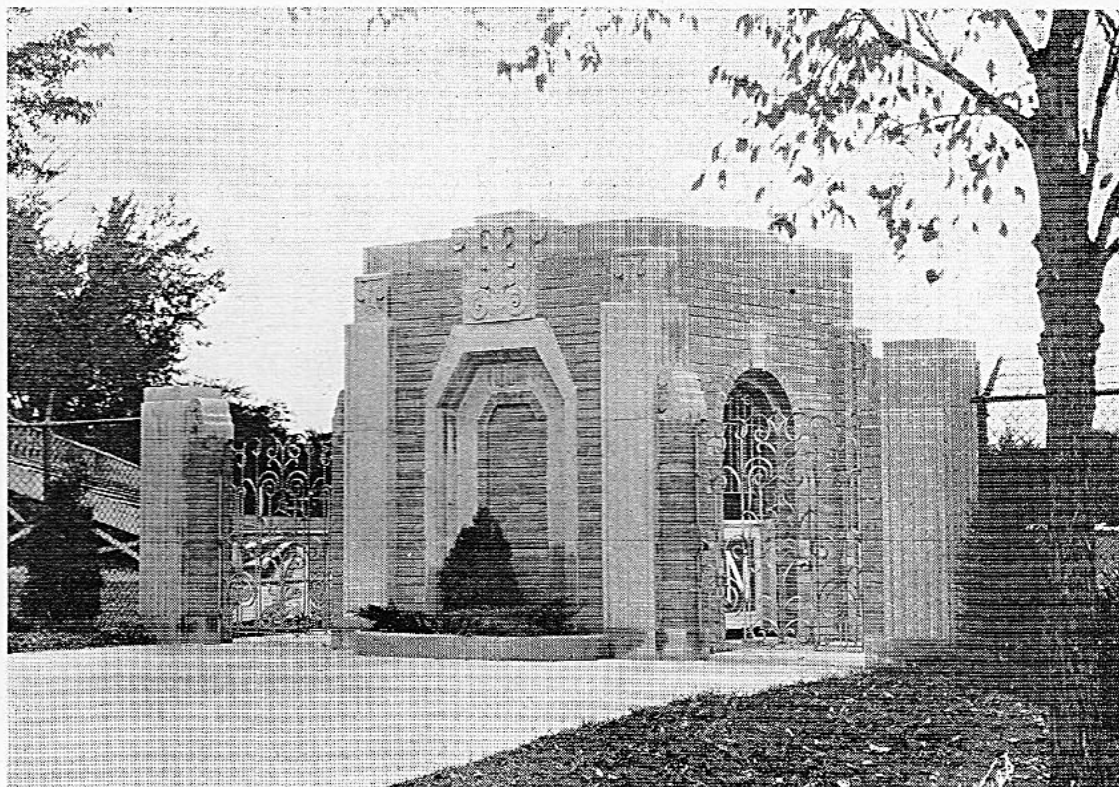
In pursuance of the step taken, Principal Arthur T. Chapin appointed a committee as follows: Robert E. White, chairman; Barry Fulton, G. W. Davis, R. E. Peters, Edward D. Phillips, L. A. Pinkney, Mabel Newitt, Eva L. Packard, Martha Rouse, and Nellie G. Stewart from the faculty, and Ralph Ellis, James North, Fred Rutledge, Wyeth Brewer, Ruth Spencer, and Geraldine Griffith of the student body. The committee began at once to study the problem. The Board of Education approved the faculty plans, and displayed great interest in the matter. Realizing that the problem was a big one, the committee felt that ample time should be taken for study and planning.

The 1930-31 Committee from the faculty remained the same with one exception—Leo F. Roedl, taking Barry Fulton's place. The 1931 student members were: Charles Bleistein, George Uits, Tipton O'Neill, Marguerite Daghy, Norma Erickson, and Catherine Busey. A small sub-committee consisting of Miss Newitt, Miss Stewart, Mr. Roedl, Mr. Peters, Mr. Chapin, Mr. White,

Boulevard. It adds greatly to the dignity and usefulness of the athletic field and it is a fitting memorial to our first principal, Charles B. Reynolds who so often said, "There's nothing too good for Northeast."

Mr. Reynolds was principal of Garfield School from May 28, 1897 to February 1, 1912; principal of Scarritt School, February 1, 1912 to March 18, 1913; principal of Northeast High School, March 18, 1913 to June 27, 1921, and principal emeritus, June 27, 1921 until his death January 13, 1926. He thus served the northeast section of Kansas City nearly twenty-nine years. His last conspicuous service was rendered Northeast High when, largely through his influence, the Board of Education purchased the block east of the building for an athletic field. Northeast is honoring herself and her first principal by naming this field the Charles B. Reynolds Memorial Field.

The total cost of the Memorial Entrance was nearly \$2,400, the cost being nearly equally divided between labor and material. The entrance would have cost much more, but many gifts of materials from former students of the school made possible a less costly structure. The Viking Ship emblem, costing \$100, is one of the finest examples of such work. It is a vitreous tile mosaic in the concrete approach to the field entrance.



June 17, 1931, the day President Herbert Hoover rededicated the Lincoln Monument, the following articles were placed in a copper box—in the corner stone of the Charles B. Reynolds Memorial Field Building.

PUBLICATIONS:

- 1931 Nor'easter (Annual).
- 1926 Courier (January 19), account of Mr. Reynolds' death.
- 1930 Courier (March 6), proposal for naming field.
- 1931 Courier (May 22), last issue of year.
- 1927 Vol. 15, No. 12, Courier, special magazine.
- 1914 Nor'easter—Magazine, Vol. II, No. 1.
- 1901 Research Manual in English, by Edward D. Phillips.
- Holy Bible—Holman Edition—Compliments W. J. Smith, American Baptist Publishing Society.
- 1930 Hand Book.
- 1930 Catalog Works of Art (Northeast).
- 1931 Kansas City Star.
- 1931 Kansas City Journal-Post.

OTHER PRINTED MATTER:

- 1931 All office Forms. 1931 School Creed.
- 1931 School Song. 1931 Program of Classes (Term I-II).
- 1931 Requirements Written Work—H.S. 1c Postal Card. 2c Stamp.
- 1925 Copy Rules and Regulations. 1931 Textbooks, used in K. C. H. S. Commencement Programs for years 1917 to 1931, inclusive. Athletic Certificate.

COINS, LUNCH CHECKS:

- 1c 1896, Indian Head. 1c 1910. 1c 1912, year H. S. building begun. 1c 1913, year H. S. building completed. 1 plus 9 plus 1 plus 3 = '14—year occupied. 1c 1916. 5c 1919. 5c 1926, Jan. 13, Mr. Reynolds died. 5c 1927. 10c 1923. 1c 1930. 5c Lunch check. 3c Lunch check. 1c Lunch check.

MISCELLANEOUS

- American Flag. Picture Athletic Field

(1930). Gloss Print Executive Board Student Council 1931. 1914 Northeast H. S. when first occupied. Northeast Athletic record. Sealed report by Coach Reeves E. Peters.

PINS:

National Honor Society, May 21, 1923. Alpha Literary Society, October 13, 1913. Northeast Society of Debate, 1913. Northeast Shakespeare Club, February, 1914. Delphian Literary Society, 1916. Clonian Literary Society, 1916. Theta Literary Society, 1921. Bepion Literary Society, March 11, 1921. Delta Literary Society, 1921. Hi-Y. Girls' High School Club. Music Memory Contest. Junior Life Saving Award. Cut of Y.M.C.A., Northeast H. S. Booklet, Y.M.C.A. Character Building. 1931 Nor'easter Head and Tail Piece.

The following committees were in charge of the building of the Memorial

FACULTY MEMBERS

Robert E. White, *Chairman*
BARRY FULTON
LEO J. ROEDL
REEVES E. PETERS

Arthur T. Chapin, *Principal*
EDWARD D. PHILLIPS
LESLIE A. PINKNEY
MISS MABEL NEWITT

George W. Davis, *Vice Principal*
MISS EVA PACKARD
MISS MARTHA ROUSE
MISS NELLIE STEWART

STUDENT MEMBERS

1930
RALPH ELLIS
JAMES NORTH
FRED RUTLEDGE
WYETH BREWER
RUTH SPENCER
GERALDINE GRIFFITH

1931
CHARLES BLEISTEIN
GEORGE UITS
TIPTON O'NEILL
MARGUERITE DAGHY
NORMA ERICKSON
CATHERINE BUSEY

1932
BETTY COURTNEY
MERCEDESE EASTERWOOD
PANSY TRENTON
CHARLES SCOTT
SIDNEY JONES
DONALD BENEDICT

CORNER STONE COMMITTEE

Faculty:
REEVES E. PETERS, *Chairman*
EDWARD D. PHILLIPS
ROBERT E. WHITE
MISS NELLIE STEWART

Students:
CHARLES BLEISTEIN
MARIAN WHITE
JEAN PETERS
LUCILLE ENGELBERT
GRACE WORKMAN

Harry L. Wagner, graduate of Northeast (1916), was the architect and contractor in charge of this building erected June-September, 1931. Although his work was first class, he refused to make the usual charge for such service.